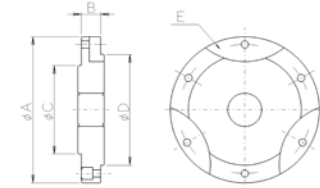
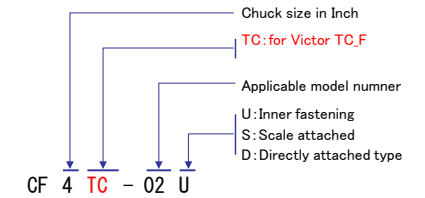


# Chuck Flange Applicable Table

Applicable Rotary Tables/Index Tables	Model of Scroll Chuck							Chuck Flange						Weight (kg)	
	Teikoku		Kitagawa		Victor		Model	Threads (Blank: 3pcs each)		Dimension ( mm ) Right dwg.					
	One-piece Jaw	Separate Jaw	One-piece Jaw	Separate Jaw	One-piece Jaw	Separate Jaw		Hex. socket head bolt	Hex. bolt	φA	B	φC	φD		
01	DMB75	MS-3		SC-3		SC85F		CF3-01	M6 × 16, M6 × 14		112	14	30	60	1.0
		MS-4		SC-4		SC110F		CF4-01	M8 × 16	M6 × 14	112	14	30	80	1.0
		MS-4		SC-4		SC110F		CF4-01U	M6 × 14	M6 × 16	112	14	80	30	1.0
02	DMB90 JNC(H)140	MS-4		SC-4		SC110F		CF4-02	M8 × 16	M6 × 16	132	17	40	80	1.6
		MS-4		SC-4		SC110F		CF4-02S	M8 × 16	M6 × 16	132	17	40	80	1.6
							TC110F	CF4TC-02	M8 × 60, M6 × 16		132	17	40	80	1.7
	MS-5		SC-5		SC130F		CF5-02	M8 × 16	M6 × 16	132	17	40	100	1.6	
	MS-5		SC-5		SC130F		CF5-02S	M8 × 16	M6 × 16	132	17	40	100	1.6	
						TC130F	CF5TC-02	M8 × 65, M6 × 16		132	17	40	100	1.8	
03	DMB90	MS-4		SC-4		SC110F		CF4-02U	M6 × 16	M6 × 16	112	17	80	40	1.2
		MS-5		SC-5		SC130F		CF5-02U	M6 × 16	M8 × 16	132	17	100	40	1.6
		MS-4		SC-4		SC110F		CF4-03	M8 × 16	M8 × 16	112	15	40	80	1.0
03	DMB110	MS-5		SC-5		SC130F		CF5-03	M8 × 16 6ヶ		168	17	40	100	2.6
							TC130F	CF5TC-03	M8 × 65, M8 × 20		168	18	40	100	3.2
		MS-6	MS-E-6	JN06	JN06T	SC165F		CF6-03	M8 × 16	M10 × 20	168	18	40	130	2.8
		MS-6	MS-E-6	JN06	JN06T	SC165F		CF6-03S	M8 × 16	M10 × 20	168	18	40	130	2.8
		MS-6	MS-E-6	JN06	JN06T	SC165F		CF6-03U	M8 × 16	M10 × 20	168	18	130	40	2.8
							TC165F	CF6TC-03	M10 × 70, M8 × 20		168	18	40	130	3.3
04	DMB135 JNC(H)200 YNC(P)200 CTB210	MS-5		SC-5		SC130F		CF5-04	M8 × 20, M10 × 20		192	20	70	100	4.1
		MS-6	MS-E-6	JN06	JN06T	SC165F		CF6-04	M10 × 20	M10 × 20	192	20	70	135	4.1
							TC165F	CF6TC-04	M10 × 70, M10 × 20		192	20	70	130	4.2
		MS-7	MS-E-7	JN07	JN07T	SC190F		CF7-04	M10 × 20	M10 × 20	192	20	70	155	4.1
		MS-7	MS-E-7	JN07	JN07T	SC190F		CF7-04U	M8 × 20	M10 × 20	192	20	155	70	4.1
							TC190F	CF7TC-04	M10 × 80, M10 × 20		192	20	70	155	4.4
05	DMB160	MS-9		SC-9		SC230F		CF9-04	M10 × 30	M12 × 25	234	24	190	70	7.1
		MS-7	MS-E-7	JN07	JN07T	SC190F		CF7-05	M10 × 20 6ヶ		234	20	60	155	6.0
							TC190F	CF7TC-05	M10 × 80, M10 × 20		234	20	50	155	6.7
		MS-9	MS-E-9	JN09	JN09T	SC230F		CF9-05	M12 × 25	M10 × 20	234	20	60	190	6.0
		MS-9	MS-E-9	JN09	JN09T	SC230F		CF9-05S	M12 × 25	M10 × 20	234	20	60	190	6.0
		MS-9	MS-E-9	JN09	JN09T	SC230F		CF9-05U	M10 × 25	M12 × 20	234	20	190	60	6.0
06	JNC(H)170 YNC(P)170							CF9TC-05	M12 × 85, M10 × 20		234	20	60	190	6.9
		MS-5		SC-5		SC130F		CF5-06	M8 × 20	M8 × 16	168	18	60	100	2.8
							TC130F	CF5TC-06	M8 × 65, M8 × 20		168	18	60	100	3.0
		MS-6	MS-E-6	JN06	JN06T	SC165F		CF6-06	M10 × 20	M8 × 16	168	18	60	130	2.8
							TC165F	CF6TC-06	M10 × 70, M8 × 20		168	18	60	130	3.1
		MS-7	MS-E-7	JN07	JN07T	SC190F		CF7-07	M10 × 20	M10 × 20	252	20	90	155	7.0
07	JNC(H)250 YNC(P)250							CF7TC-07	M10 × 80, M10 × 20		234	20	90	155	6.2
		MS-9	MS-E-9	JN09	JN09T	SC230F		CF9-07	M12 × 25	M10 × 20	234	20	90	190	6.0
							TC230F	CF9TC-07	M12 × 85, M10 × 20		234	20	90	190	6.4
08	DEF200	MS-5		SC-5		SC130F		CF5-08	M10 × 20, M8 × 16		200	20	40	100	4.4
		MS-6	MS-E-6	JN06	JN06T	SC165F		CF6-08	M10 × 20	M10 × 20	200	20	40	130	4.4
		MS-7	MS-E-7	JN07	JN07T	SC190F		CF7-08	M10 × 20	M10 × 20	200	20	40	155	4.4
		MS-7	MS-E-7	JN07	JN07T	SC190F		CF7-08D	(Directly attached type)		192	10	40	155	2.0
		MS-9	MS-E-9	JN09	JN09T	SC230F		CF9-08	M10 × 20	M12 × 25	234	20	190	40	6.0



φC is about 0.2 smaller than the mating inside diameter.  
There is no notch E on the types equipped with only hex. socket head bolts mentioned in the table.

Model of Chuck Flange	Model of Chuck	Weight	Victor Dimension(mm) Below			
			φA	B	C	φD
CF3-	SC85F	1.6	87	46	15	16
CF4-	SC110F	3.7	110	58	18	24
CF5-	SC130F	5.0	132	60	20	32
CF6-	SC165F	9.0	167	66	25	44
CF7-	SC190F	14.8	192	75	30	54
CF9-	SC230F	22.0	233	82	35	70
CF4TC	TC110F	3.4	112	58	31	24
CF5TC	TC130F	5.1	132	60	37	32
CF6TC	TC165F	10.0	167	66	44	44
CF7TC	TC190F	14.0	192	75	46	54
CF9TC	TC230F	21.0	233	82	55	70

